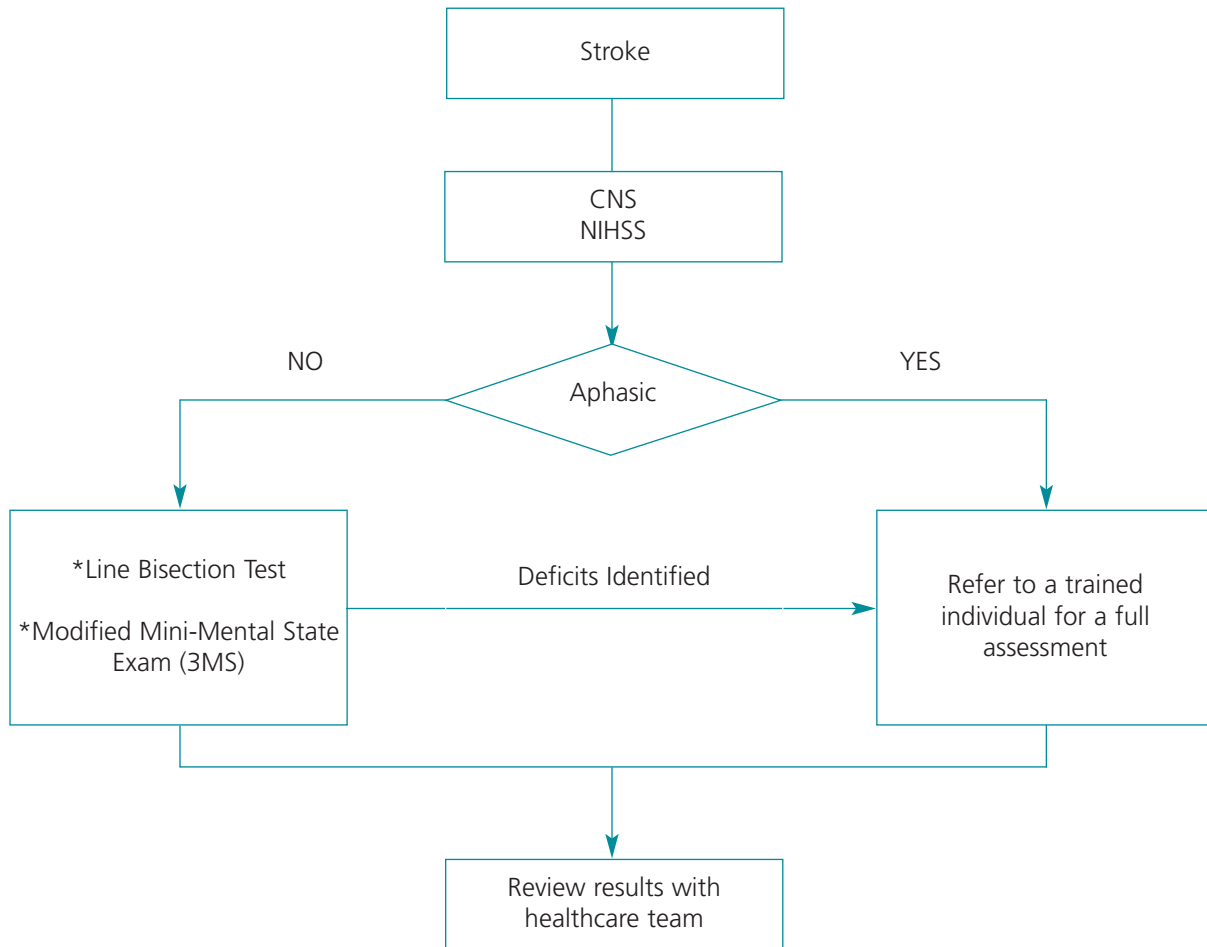


Figure 1: Algorithm for Cognitive Screening in Stroke Clients



Note:

* Client needs to be alert to participate in the cognitive screen.

* With changes in medical status and/or environment, a reassessment of the client's cognition is warranted.

Reference: The Stroke Canada Optimization of Rehabilitation by Evidence (SCORE) Project Team (February 2005). Post-stroke Evidence-based Recommendations for Upper Extremity, Lower Extremity and Risk Assessment of Pressure Ulcers, Dysphagia, Falls, Cognition and Depression. Toronto: SCORE.