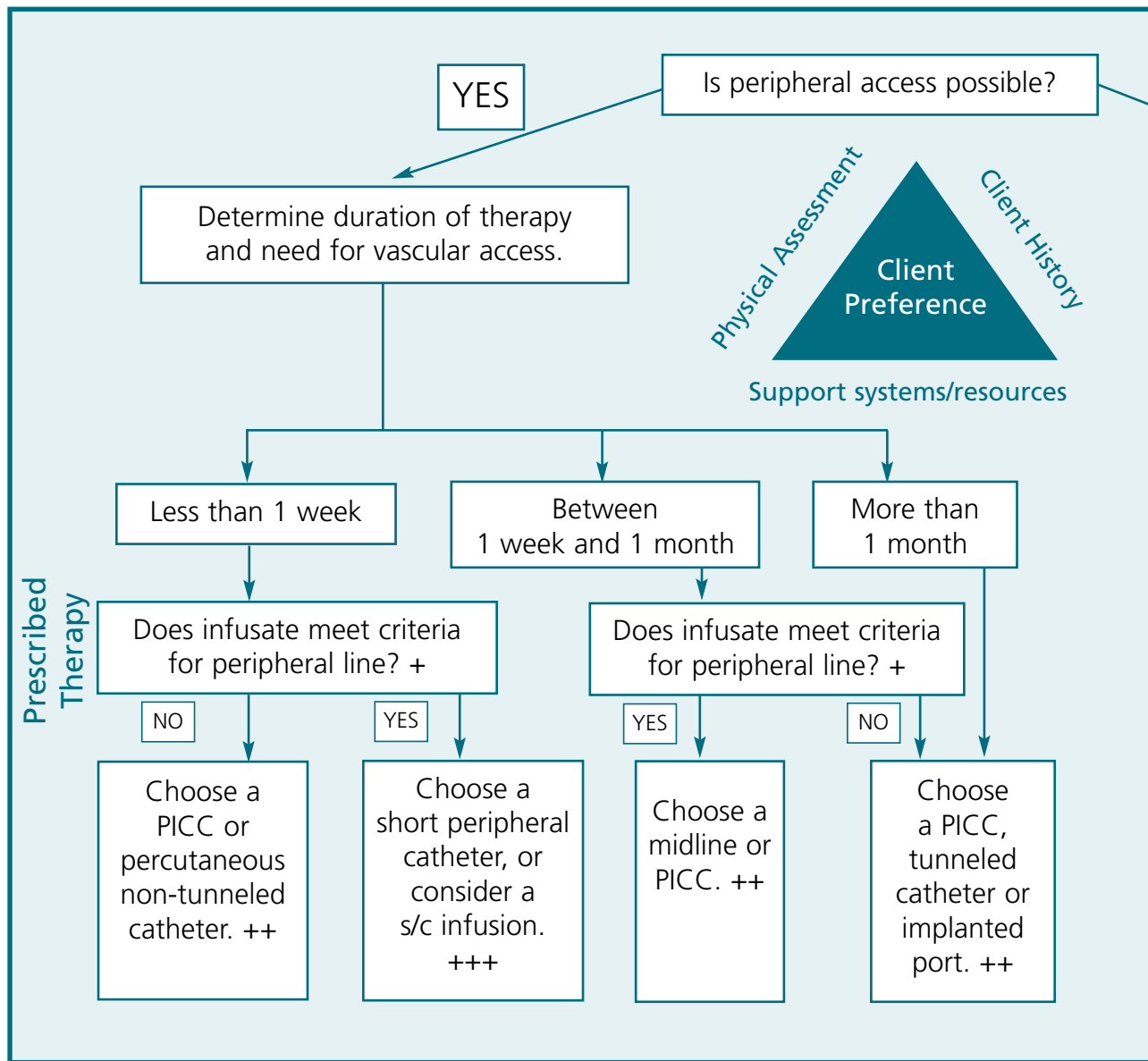


Appendix D: Assessment and Device

Reproduced with permission. Adapted from: Halderman, F. (2000). Selecting a vascular access device. *Nursing 2000*, 30(11), 59-61.



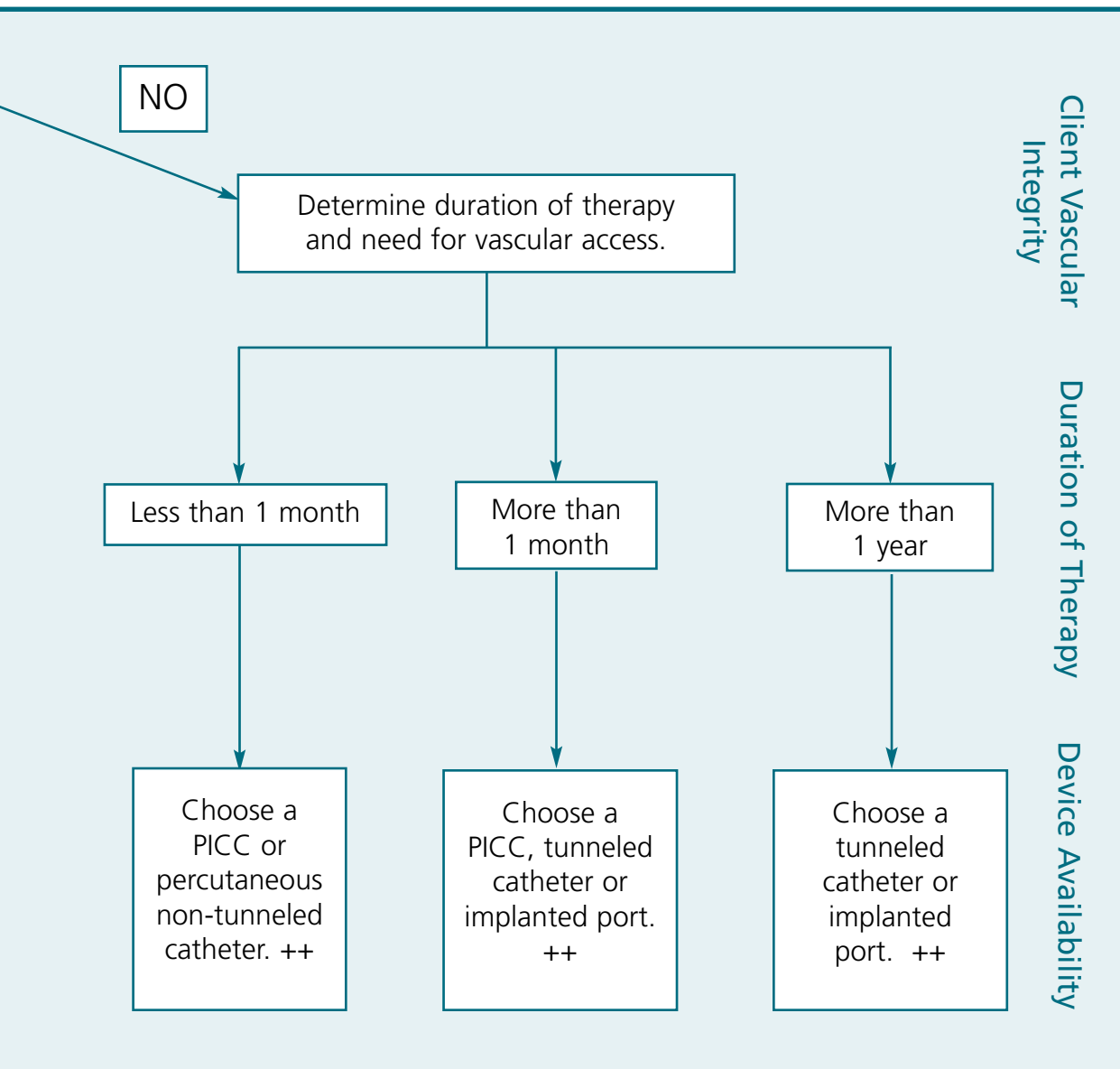
+ Infusate criteria for use in peripheral infusions:

- Osmolality must be less than 500 mOsm/L.
- The pH must be between 5 and 9.
- The medication must not be a vesicant or irritant.

++ Catheter lumens:

- Consider the need for single or multi-lumen catheter to deliver the prescribed therapy.
- Select the least number of lumens to deliver the required therapy.

Selection Algorithm



+++ Considerations for subcutaneous infusions include:

- Hydration, intermittent infusions, and continuous infusions of isotonic fluids and a few selected medications.
- Assessing for this mode of therapy with some client populations.